



Featuring

Studio & Outdoor

Elinchrom Flash System

Power by Elinca

Power Specs





Style FX & BX	Style 100 FX	Style 400 FX	Style 100 BX	Style 400 BX
Joule / WS; max.	100	400	100	400
F-stop, 1m, 100 ISO, 1/250 s; Reflector 48°	32.5	64.5	32.5	64.5
Power range; Ws	6.25 – 100	25 – 400	6.25 – 100	25 – 400
Mains voltage; Volt	200 V – 260 V	200 V – 260 V	90 V – 260 V	90 V – 260 V
Variable flash power, in f-stop stepless	5 f-stop 1/16 – 1/1			
Recycling, min. / max. 230 V	0.2 / 0.5 s	0.3 / 1.2 s	0.2 / 0.5 s	0.3 / 1 s
Recycling, min. / max. 115 V	-	-	0.2 / 0.6 s	0.3 / 1.2 s
Flash duration @ t 0,5	1 / 1800 s	1 / 900 s	1 / 1800 s	1 / 900 s
Voltage stabilization	+/- 0.5 % maximum stability for digital imaging			
Sync voltage	5 V maximum compatibility with digital cameras			
Modelling lamp 230 V	100 W – E 27 Code 23002		150 W – E27 Code 23035	
Modelling lamp 115 V	-		150 W – E27 Code 23019	
Flashtube code	24032		24029	
Plug-in flashtube	-		Flashtube, user replaceable	
Fan cooled	All models			
Dimensions: length x diameter in cm	21 x 14 cm			
Weight in kg	1.55	1.9	1.65	1.95
Code 220 V - 240 V 50 - 60 Hz	20529	20531	20532	20534
Code 90 V - 260 V 50 - 60 Hz	-	-	20532	20534

Style RX	Style 300 RX	Style 600 RX	Style 1200 RX
Joule / WS; max.	300	600	1200
F-stop, 1m, 100 ISO, 1/250 s; Reflector 48°	64.1	90.1	128.1
Power range; Ws	9 - 300	18 - 600	37 - 1200
Variable flash power, in f-stop stepless	6 f-stop 1/32 - 1/1		
Recycling, min. / max. 230 V	0.2 - 0.6 s	0.22 - 1.0 s	0.25 - 1.8 s
Recycling, min. / max. 115 V	0.25 - 0.8 s	0.3 - 1.5 s	0.4 - 2.9 s
Flash duration @ t 0,5	1/2850 s	1/2050 s	1/1450 s
Voltage stabilization	+/- 0.5 %		
Sync voltage	5 V		
Modelling lamp 230 V	250 W E 27-230 V		300 W GX 6.35-230 V
Modelling lamp 115 V USA	150 W - BA 15 D		250 W - BA 15 D
Flashtube code	24029		24068
Interface for Mac and PC	All models		
Plug for Remote control	All models		
Plug-in flashtube	All models		
Fan cooled	1 fan		2 fans
Dimensions: length x diameter in cm	21 x 14	21 x 14	30 x 14
Weight in kg	2.3	2.6	3.45
Code 230 V 50 - 60 Hz	20625	20626	20627
Code 115 V - 140 V 50 - 60 Hz	20725	20726	20727

Digital RX Power Packs	Digital 1200 RX	Digital 2400 RX
Joule / Ws	1200	2400
F-stop 1m ISO 100; 1 / 125 s; Reflector 48°	128	180
Recycling min. / max. 230 V / fast	0.24 – 1.0 s	0.4 – 1.9 s
Recycling min. / max. 230 V / slow	0.35 – 1.9 s	0.55 – 3.6 s
Flash duration t 0.5, max. power, 2 x A heads	1/3400 s	1/1700 s
Flash duration t 0.5, max. power, 1x Digital S head	1/1200 s	1/600 s
Power range in Ws, 6 f-stop	37 – 1200	75 – 2400
Computer Interface		All models
Socket for Remote control		All models
Sync voltage		5 V
Voltage stabilization		+ - 0.5%
Fan cooled		All models
Modelling lamp, proportional / free / off		All models
Charge ready beep / on-off		All models
Photocell / on-off		All models
ADF, auto dump function		All models
Dimensions in cm	22 x 13 x 23	22 x 13 x 32
Lightweight in kg	4.6	6.6
Code 230 V 50 - 60 Hz	10256	10258
Code 115 - 130 V 50 - 60 Hz	10255	10257

Digital AS	Digital 3000 AS	Digital 1500 AS
Joule / Ws 230 V min. / max.	62 - 3000	31 - 1500
F-stop 1m ISO 100; 1 / 250 s; Reflector 48° 230 V	180.3	128.6
Recycling rapid/medium, max. power 230 V	3.5 s / 4.5 s	1.5 s / 2.1 s
Flash duration t 0.5 max. power, 3 S heads connected	1/1150 s	1/1850 s
Memory		Retains last setting
IR Remote control		All functions, 8 channel settings
Power range		6.6 f-stop
Total power asymmetry		56 individual power settings for each head
Sync voltage		12 V
Ready beep on / off		All models
Photocell on / off		All models
Dimensions in cm	49 x 14 x 32	49 x 14 x 27
Weight in kg	11.65	8.6
Code 230 V 50 - 60 Hz	10254	10248
Code 115 - 130 V 50 - 60 Hz	10253	10247

Note: Tolerances of specifications and components conform to IEC and CE standards. Technical data subject to change. No guarantee for misprints. The listed values can differ due to tolerances in components, or measuring instruments.

Professional Flashheads

	Digital SEE	Digital SE	Digital S	A 3000 N Speed	X 6000 N Twin	Digital RE
Output in Joule / Ws	2400	3000	4000	3000	2x 3000	3000
Modelling lamp 230 V Modelling lamp 110 V	300 W / GX 6.35				650 W GX 6.35	500 W or 625 W / R7s
Modelling lamp on / off	All models					
Safety Fuse 230 V	2.5 AF					4 AF
Safety Fuse 110 V	5 AF					8AF
Flashtube	Digital X	Digital XL	Digital XXL	Speed	Twin Tube	Linear
Centred umbrella holder	All models					
Stand adapter	All models incl. additional umbrella holder					
Cooling fan	All models					
Bayonet, breech-lock-ring	All models					Barndoor support
Weight incl. 5 m flash cable	2.4	2.4	2.4	2.4	3.3	2.5
Dimensions in cm	22 x 14					9 x 37.5
Code 230 V 50-60 Hz	20172	20174	20150	20168	20182	20170
Code 110 V 50-60 Hz	20173	20175	20149	20167	20183	20169
Code Flashtube	24034	24045	24037	24053	2 x 24069	24022

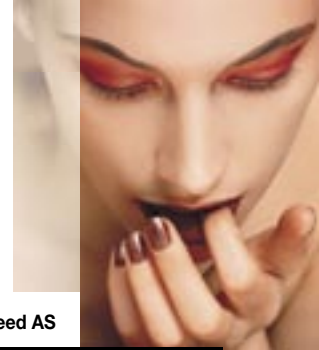
Budget Flashheads

	Mini S	Mini A Speed	Twin X 4
Output in Joule / Ws	2400	2400	2 x 2400
Modelling lamp 230 V	250 W / E27	250 W / E27	300 W / GX 6.35
Modelling lamp 110 V	150 W / E27	150 W / E27	
Modelling lamp on / off	All models		
Safety Fuse 230 V	2.5 AF		2.5 AF
Safety Fuse 110 V	2 AF		5 AF
Flashtube	Omega	Speed	Twin Tube
Centred umbrella holder	All models		
Stand adapter	All models incl. additional umbrella holder		
Cooling fan	All models		
Bayonet, breech-lock-ring	All models since 1974		
Weight incl. 5 m flash cable	2.4	2.4	3.3
Dimensions in cm	22 x 13.5	22 x 13.5	22 x 14
Code 230 V 50-60 Hz	20106	20104	20180
Code 110 V 50-60 Hz	20105	20103	20181
Code Flashtube	24034 s	24053	

Ringflash

	RF 3000	Ranger RX-RF 1500
Max. flash power	3000 Ws / all EL power packs	1500 Ws / only Ranger RX
Compatible power packs	Digital RX 1200 & 2400, Digital AS 1500 & 3000, Classic 1500 & 3000, Micro AS 1500 & 3000	Ranger RX, Ranger RX Speed, Ranger RX Speed AS
Flash duration @ full power t 0.5 – t 0.1	1/2600 – 1/935 (Digital RX 1200)	1/2600 – 1/935 (Ranger RX)
Flash duration @ min. power t 0.5 – t 0.1	1/1920 – 1/760 (Digital RX 1200)	1/1920 – 1/760 (Ranger RX)
F-stop 2 m, ISO 100, @ full power, 1/500 s	22.3 (Digital RX 1200)	22.3 (Ranger RX)
Inner diameter	10 cm	
Outer diameter	20 cm	
Cable length	5 m	2 m
Camera adaptation	Universal, incl. 1/4" and 3/8" camera screw	
Dimensions (L x W x H)	23 x 20 x 32 cm	
Weight	Including cable, 1.9 kg	Including cable, 1.8 kg
Supplied with	UV coated protection glass filter / flash cable	
Ringflash 120 /230 V	20494	20493
Matt glass diffuser, optional accessory	402.013	
UV coated protection glass filter, spare part	402.012	
N.B. Prevent overheating, cool down after maximum 25 flashes		





Autonomous Flash

	Ranger RX	Ranger RX Speed	Ranger RX Speed AS
Joule / WS; max.	1100		
Power distribution	Symmetrical		Asymmetrical
Interface for Computer and Hand Remote	All RX models; requires optional accessories + ERS software		
F-stop, 2 m, 100 ISO, 1/250 s; Reflector 48°	64		64 @ 100% ; 45 @ 66% 32 @ 33%
Power range; Ws	17 – 1100		100%: 17 – 1100 66%: A output: 11.5 – 733 33%: B output: 5.7- 366
Power range in f-stop	7 / 1.5 – 7.5		8.5
Recycling, fast @ min. / max. power	0.5 s / 5.5 s	0.3 s / 3 s	A output: fast 0.3 s / 3 s B output: fast 0.19 s / 1.2 s
Recycling slow @ min. / max. power	0.9 s / 14 s	0.45 s / 5.5 s	A output: slow 0.45 s / 5.5 s B output: slow 0.22 s / 1.9 s
Flash duration @ t 0,5; 1 / 2 A heads	1/2300 s / 1/4310 s		A output: 1/2300 s / 1/4310 s B output: 1/5120 s
Flash duration @ t 0,5; 1 / 2 S heads	1/1160 s / 1/2250 s		A output: 1/1250 s / 1/2250 s B output only: 1/2310 s
*Flashes out of one charged Battery @ min. power, slow/fast recycle	3800 / 2600	5100 / 3700	
*Flashes, out of one charged Battery @ max. power, slow/fast recycle	140 / 110	250 / 195	
Sync voltage	5 VDC		
Stabilisation	+/- 1 V		
**Battery lead acid (gel-electrolyte)	12 V / 7 Ah lead acid	12 V / 12 Ah lead acid	
Modelling lamp: ***1 head connected	2 x 50 W / 12 V or ***1 x 100 W / 12 V		
Standard charger: recharge time, approx.	3 h	5 h	
Quick charger: recharge time, approx.	Do not use	3 h	
Dimensions in cm	19 x 14 x 24	19 x 14 x 28	
Weight in kg, incl. Battery	6.5	8	
Ranger pack, included parts	10263 incl.: 19290 + 11075 + 19289 + 19293	10265 incl.: 19280 + 11075 + 19289 + 19283	10267 incl.: 19280 + 11075 + 19289 + 19283

* Note: The number of flashes, recharging time and battery life, may vary from battery to battery!!

**Note: Used batteries may need to be recycled! Check your local regulations!

*** Note: Deliveries for 110 V countries includes Charger 19293

Ranger Heads

	Free Lite S	Free Lite A Speed	Ringflash 1500
Output in Joule / Ws	2400	2400	1500
Modelling lamp	50 W 12 V	50 W 12 V	-
Modelling lamp timer on / off	15 & 30 seconds		-
Safety Fuse	5AF		-
Flashtube	Omega	Speed	4 pole - Speed
Centred umbrella holder	All models		-
Stand adapter	All models		3/8 – 1/4
Bayonet, breech-lock-ring	All models since 1974		-
Weight incl. 5 m flash cable	2.4 kg	2.4 kg	1.8 kg / *2m cable
Dimensions in cm	22 x 13.5	22 x 13.5	23 x 20 x 32 cm
Code	20100	20101	20493
Code Flashtube	24034 s	24053	

Note: Tolerances of specifications and components conform to IEC and CE standards. Technical data subject to change. No guarantee for misprints. The listed values can differ due to tolerances in components, or measuring instruments.

Ranger RX / F- Stop Power Table

F-Stop @ 2m, 100 ISO, Free Lite S Head + Ranger RX Pack

26149	Maxi Spot Reflector 29°	90.1
26147	Maxi Lite Reflector 43°	64.6
26137	High Performance Reflector 48°	64.1
26141	Standard Reflector 50°	45.8
26140	Compact Reflector 65°	45.2
26144	Grid Reflector 60°	45.0
26164	Varistar Reflector 90°	32.6
26143	Wide Reflector 90°	32.0

Display Power Equivalents

7.5	1100 Ws
7.0	780 Ws
6.5	550 Ws
6.0	390 Ws
5.5	275 Ws
5.0	195 Ws
4.5	137 Ws
4.0	98 Ws
3.5	68 Ws
2.5	34 Ws
1.5	17 Ws

Continuous Light

	Scanlite (1000 W)	Minilite (250 W)
Aperture: 2m / 100 ISO 1/30 s, Ref. 48°	8.6	5.6
Aperture with Pyrex dome mat	8.0	-
Lux @ 1000 W	6500	-
Lux @ 250 W	-	1050
Colour Temperature °K	3200°K	3200°K
Bayonet, breech-lock-ring	All models since 1974	
Modelling lamps, configurations	300, 650, 1000 / GX 6.35	100, 250 W / E27
Cooling fan	All models	
Weight in kg	1.2 / incl. cable 1.7	1.1
Dimensions in cm	14x18 / incl. glass dome 22	22 x 13
Code 230 V 50 - 60 Hz incl. lamp	20996-300 W / 20997-650 W / 20994-1000 W	20651
Code 115 V 50 - 60 Hz exclude- / inc.l lamp	20993-1000 W	-

Rotalux

Angle

Coverage

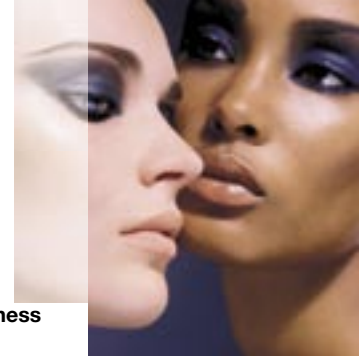
Brightness

The table shows: coverage represents 1 f-stop difference centre to edge in degrees and f-stop at 2 m distance and code numbers for spare diffusers.

Rotalux: Quadra, Octa, Recta, Strip	in degrees	minus 1f-stop from centre in meters	2 m distance Style 600 @ 1 / 250 s
26178 Rotalux 70 x 70cm	69°	2.8	16.6
26288 Front Diff. (without outer diffuser)	68°	2.7	22.1
26295 Inner Diff. (without inner diffuser)	83°	3.6	22.2
26179 Rotalux 100 x 100cm	69°	2.8	16.7
26289 Front Diff. (without outer diffuser)	69°	2.8	22.1
26296 Inner Diff. (without inner diffuser)	81°	3.4	22.2
26180 Rotalux 35 x 90 cm vert. / horizontal	66° / 69°	2.6 / 2.8	16.5
26290 Front Diff. (without outer diffuser)	59° / 73°	2.3 / 3	22.1
26297 Inner Diff. (without inner diffuser)	66° / 82°	2.6 / 3.5	22.6
26268 Diff. (for 26180) 15 x 90 cm vert. / horizontal	55° / 63	2 / 2.3	11.5
26181 Rotalux 50 x 130cm vert. / horizontal	59° / 69°	2.3 / 2.8	16.6 / 16.5
26291 Front Diff. (without outer diffuser)	61° / 75°	2.4 / 3.1	22.2
26298 Inner Diff. (without inner diffuser)	64° / 87°	2.5 / 3.8	22.8
26270 Diff. (for 26181) 25 x 130 cm vert. / horizontal	59° / 66°	2.3 / 2.6	11.5
26269 Diff. (for 26181) 15 x 130 cm vert. / horizontal	58° / 55°	1.9 / 2.1	11
26183 Rotalux 100 cm octagonal	68°	2.7	16.6
26293 Front Diff. (without outer diffuser)	66°	2.6	22.1
26300 Inner Diff. (without inner diffuser)	82°	3.5	22.2
26184 Rotalux 135 cm octagonal	81°	3.4	22.2
26294 Front Diff. (without outer diffuser)	61°	2.6	22.2
26301 Inner Diff. (without inner diffuser)	75°	3.1	22.3

NB. Without diffusers the effect is of a huge normal reflector





Indirect Softlites

Angle

Coverage

Brightness

The table shows: coverage represents 1 f-stop difference centre to edge in degrees and f-stop at 2 m distance and code numbers for spare diffusers.

Recta, Strip, Octa, Quadra	in degrees	minus 1 f-stop from centre in m	2 m dist. Style RX 600 @ 1/250 s
26154 EL Recta Lite 72 x 175 cm vert. / horizontal	56° / 77°	2.16 / 3.2	16
26224 Front Diff. (without outer diffuser)	46° / 95°	1.7 / 4.4	16.6
26160 EL Strip Lite 33 x 175 cm vert. / horizontal	64° / 73	2.5 / 3	8.7
26230 Front Diff. (without outer diffuser)	48° / 100°	1.8 / 4.8	11.6
26158 EL Octa Lite 190 x 190 cm	71°	2.9	16
26228 Front Diff. (without outer diffuser)	82°	3.54	16.2
26156 EL Quadra Lite 145 x 145cm	73°	3	11.8
26226 Front Diff. (without outer diffuser)	75°	3.10	16.2
26236 Round Diff. 125 cm	66°	2.6	11

NB. Without diffusers the effect is of a huge normal reflector.

Elinchrom Spots

Minispot

ZoomSpot 18°-36°

Fiber Lite

Diameter of illumination, distance 2 m, min. / max.	1 m	0.7 / 1.3 m	Dist. 5 cm ø 4 cm Dist. 10 cm ø 7 cm
Aperture from 2 m, 100 ISO, t 1/125, Chic 1 - 1200 J @ max. power, spot / wide	11.5	22.6 / 16.7	Dist. 10 cm with Lens / 64.9 f
Code 230 V 50 - 60 Hz	26420	26481	26430 / 31
Code 115 - 130 V 50 - 60 Hz			
Max. flash power in Joule / Ws	3000		
Max. modelling light	300 / 650 W	Note: Enclosing accessories can build up excessive heat!	
Dimensions: L x W x H in cm	26 x 12	45 x 15 x 15	-
Weight in kg	0.6	4.75	-

Modelling Lamps 230 V

Code	Power	Lumen	Av. Life	Type	Socket	To use with
23044	50 W /12 V	900	3000 h	Halogen	GX 6.35	Free Lite S, FreeLite A
23046	100 W /12V	2200	2000 h	Halogen	GX 6.35	Free Lite S, FreeLite A
23002	100 W	2700	500 h	Krypton	E 27	EL 250, 250 S, 500, 500 S, 22, 23, 66, S, T, Box Lite, Style 300 / 600, Style FX 100 / 400, MiniLite
23035	150 W	2400	2000 h	Halogen	E 27	Style BX 100 / 400
23004	250 W	4000	500 h	Halogen	E 14	EL A
23005	650 W	20000	45 h	Halogen	GX 6.35	EL X6000N, Spot Lite 3000, X 8000, X, ScanLite
23018	250 W	4500	2000 h	Halogen	E 27	EL 66, S, T, Style S & RX 300/600, Mini S/A, MiniLite
23020	500 W	9000	500 h	Halogen	E 14	EL A
23022	300 W	8500	45 h	Halogen	GX 6.35	EL S1500N, S3000N, S1500, S3000, A3000N, A4000 A2/4, Style S / RX 1200, Digital SEE, SE, S, ScanLite
23029	625 W	9500	2000 h	Halogen	R7 s	EL R3000, Mini R Head, R2000, R2, R4
23052	1000 W	27500	75 h	Halogen	GX 6.35	ScanLite
23034	200 W	4000	45 h	Halogen	GX 6.35	EI 1000, 750 S, 1500 S, 1500 R

Note: Tolerances of specifications and components conform to IEC and CE standards. Technical data subject to change. No guarantee for misprints. The listed values can differ due to tolerances in components, or measuring instruments.

Classic Compact EL-500**Elinchrom 500**

Joule (Ws)	500
F-stop 1m; ISO 100; 1/250s; Reflector 48°	64.8
Recycling min./max. 230 V	0.3-0.9 s
Recycling min./max.115 V	0.4-1.6 s
Flash duration t 0.5	1/2600 s
Variable flash power	stepless
Sync. voltage	12 V
Modelling Lamp E 27	100 W
Plug-in flash tube	yes
Flashtube code	24029
Size: length x diameter in cm	28.5 x 13.5
Weight in kg	2.25
Code, 230 V 50-60 Hz	20607C
Code, 115-130 V 50-60Hz	20707 C

Micro Compact**Micro 750 Bi-Voltage**

Joule (Ws) 230 V min./max.	47/750
Joule (Ws) 115 V min. / max.	33/530
F-stop 1m ISO 100; 1/250 s; Reflector 48° 115 / 230 V	64.8/90.3
Recycling 115 V / 230 V	2.5 s / 1 s
Flash duration t 0.5, 115 / 230 V	1/2000 s - 1/2350 s
Power range in f stops	5f in 1/10 stops
Total power settings	41
Synchro voltage	12 V
On/off ready Beep	yes
On/off photocell	yes
Dimensions in cm	33x14
Weight in kg	2.8
Product code 230 V 50-60 Hz	20617
Product code 115 - 130 V 50-60 Hz	20717

Classic Power Packs

Classic Power Packs	Classic 1500	Classic 3000	Classic 6000	Combi 3000
Joule (Ws)	1500	3000	6000	3000
F-stop 1m ISO 100; 1/250 s; Reflector 48°	128.3	180.3	256.3	180.3
Recycling 230 V/fast	1.8 s	2.8 s	5.5 s	3.3 s
Charging	fast/auto/slow			
Flash duration t 0.5 max.	1/1750 s	1/1150 s	1/1150 s (2 hd)	1/1950 s (2 hd)
Power range	1/16 - 1/1			asymmetric
Synchro voltage	12 V			
On/off photocell	yes			
Size in cm	49x14x27	49x14x32	49x14x43	49x14x32
Weight in kg	8.9	11.7	17	11.35
Code 230 V 50 - 60 Hz	10224	10226	10228	10218
Code 115 - 130 V 50 - 60 Hz	10223	10225	10227	10217
Tolerances of specifications and components conform to IEC and CE standards				
Technical data subject to change. No guarantee for misprints. The listed values can differ due to tolerances in components, or measuring instruments				

D-Lite "Entry Level" Compacts Flash Units

Elinchrom D-Lite	D-Lite 2	D-Lite 4
Ws/ Joule	200	400
F-Stop	45.3	64.3
Power range f-stop	5	5
Power range Ws	12 - 200	25 - 400
Power adjustment	All 1/10	
Recycling time, max. power	0.7 s	1.3 s
Recycling time at 110 V	0.8 s	1.6 s
Flash duration	1/1200	1/800
Power stabilisation	0.5%	
Auto Power dumping	Auto	
Voltage	Multi voltage	
Modelling lamp	100W / E27	
Modelling lamp setting	Prop, half, on/off	
Flashtube	Med. duty flash tube	
Umbrella fitting	Stand bracket	
Sync voltage	5V max. compatibility with digital cameras	
Sync socket	3.5 jack	
Temperatur protection	All units	
Overvoltage protection	All units	
Dimension	21 x 16 cm	
Weight	1.1 kg	1.3 kg
Heat enclosing accessories, Snoots, Minispot, Reflectors with Grids, may overheat the unit. Please read manuals for details.		
Tolerances and specifications conforming to IEC and CE standards.		
Technical data subject to change without notice.		